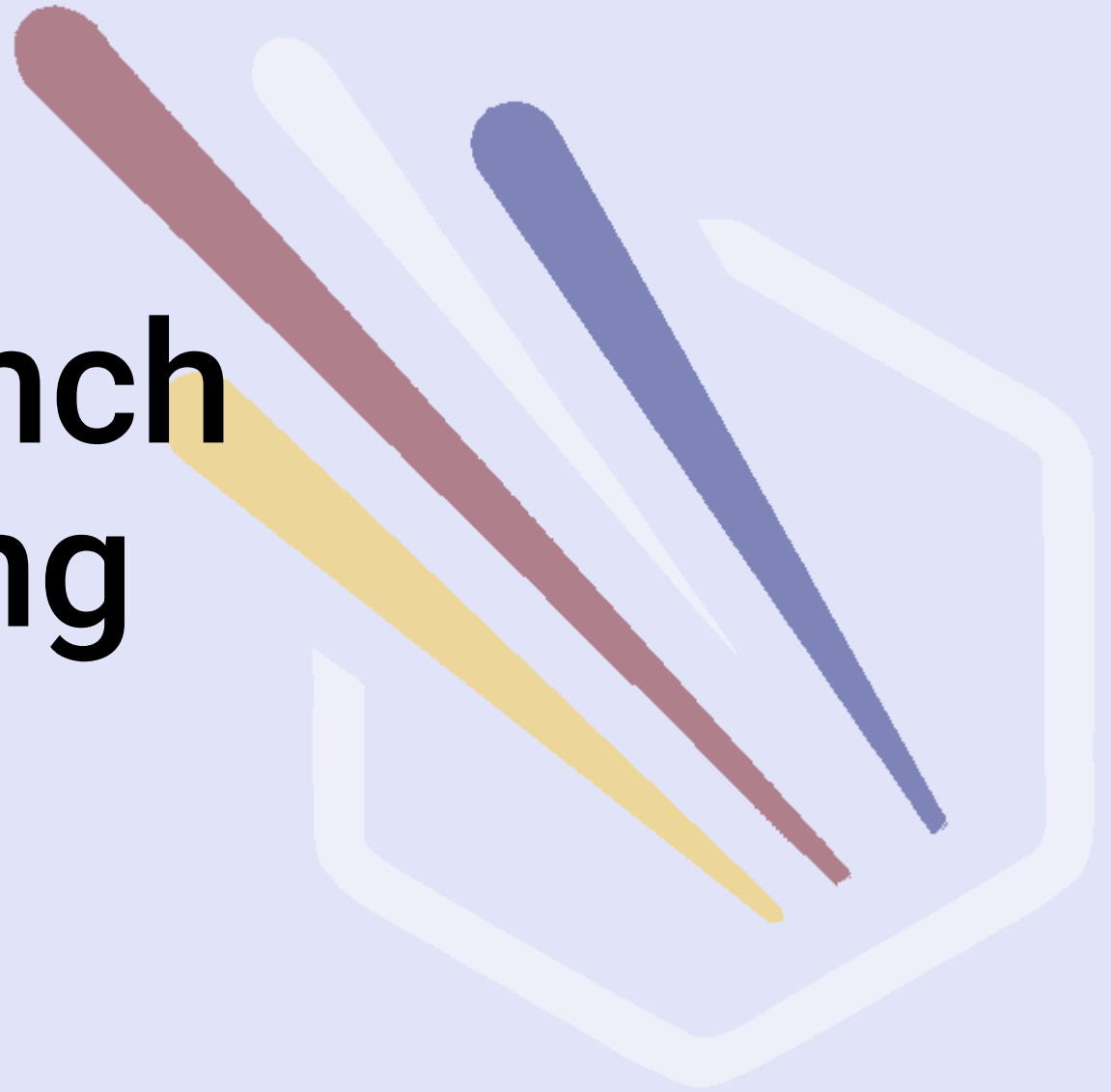
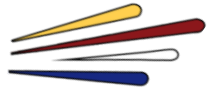


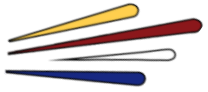
The Workbench in the Training Center



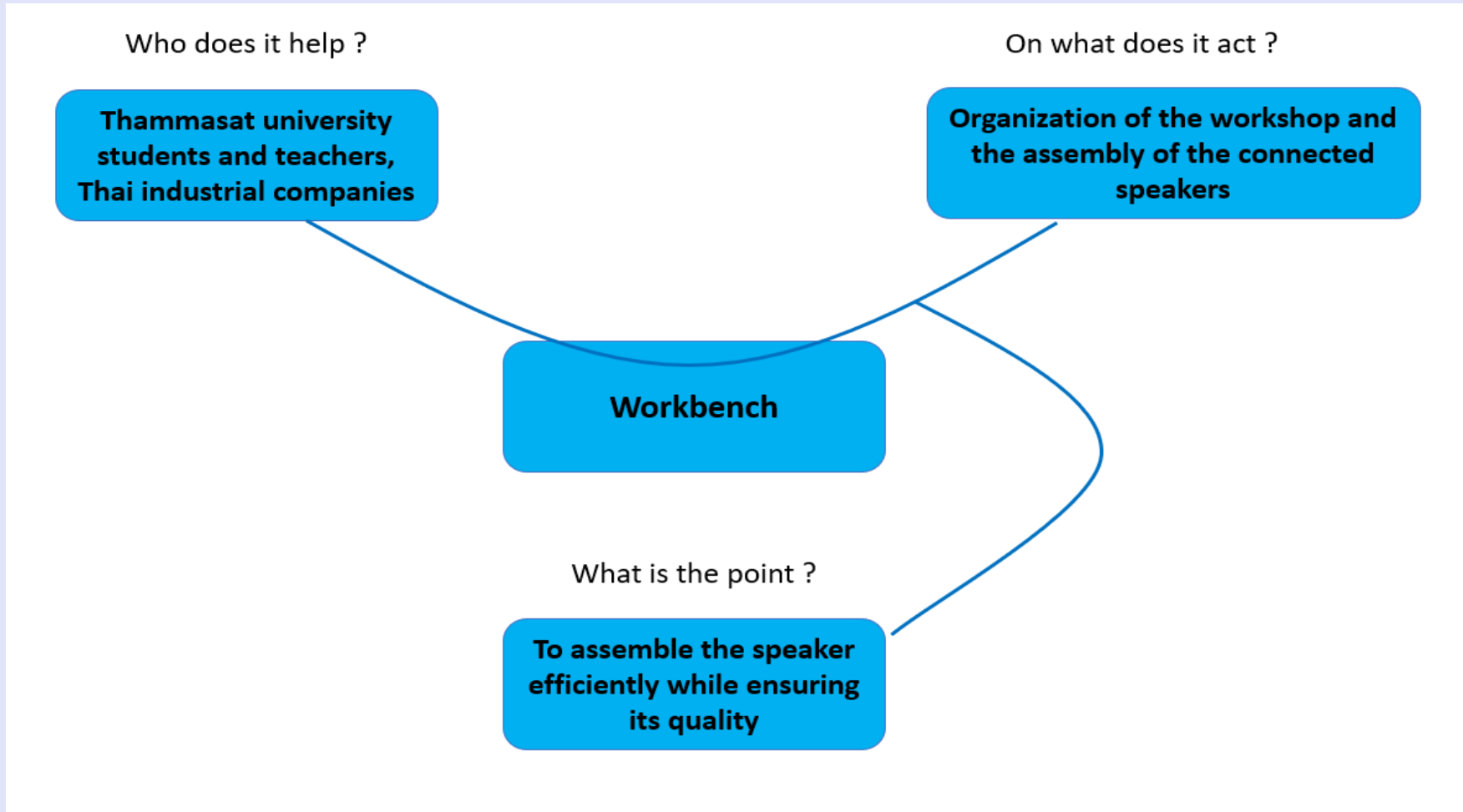


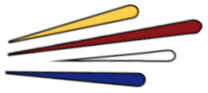
Summary

- 1 The workbench in the Training Center
- 2 Training for teachers and students
- 3 Workbench's Ergonomics



Need and objectives



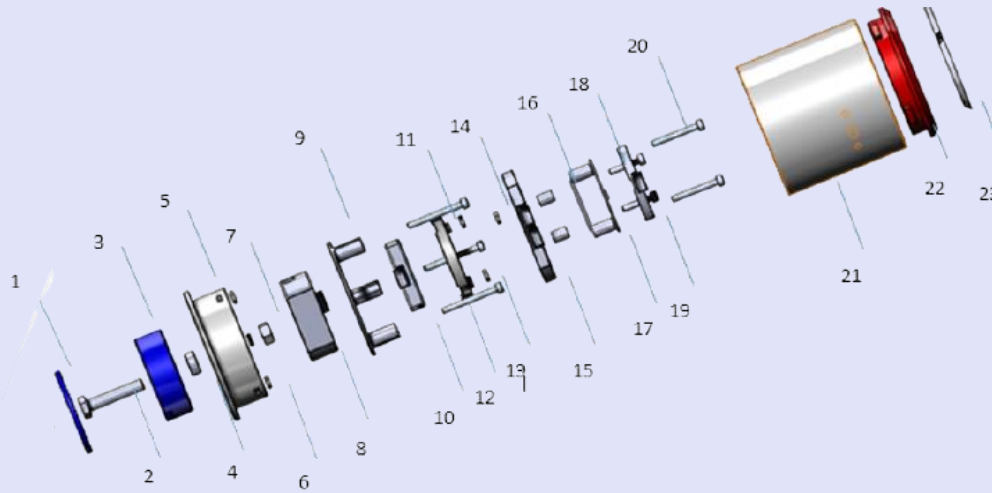


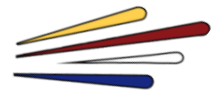
Connected Speaker

20	Place the vibrating pot in the bottom lid.	8 - 5		5c
30	Place the strut between the support and the lower lid and screw on the lower assembly.	1 - 2 - 3 - 4 - 5		50a
40	Attach the battery on its support with magnets.	10 - 11		5s

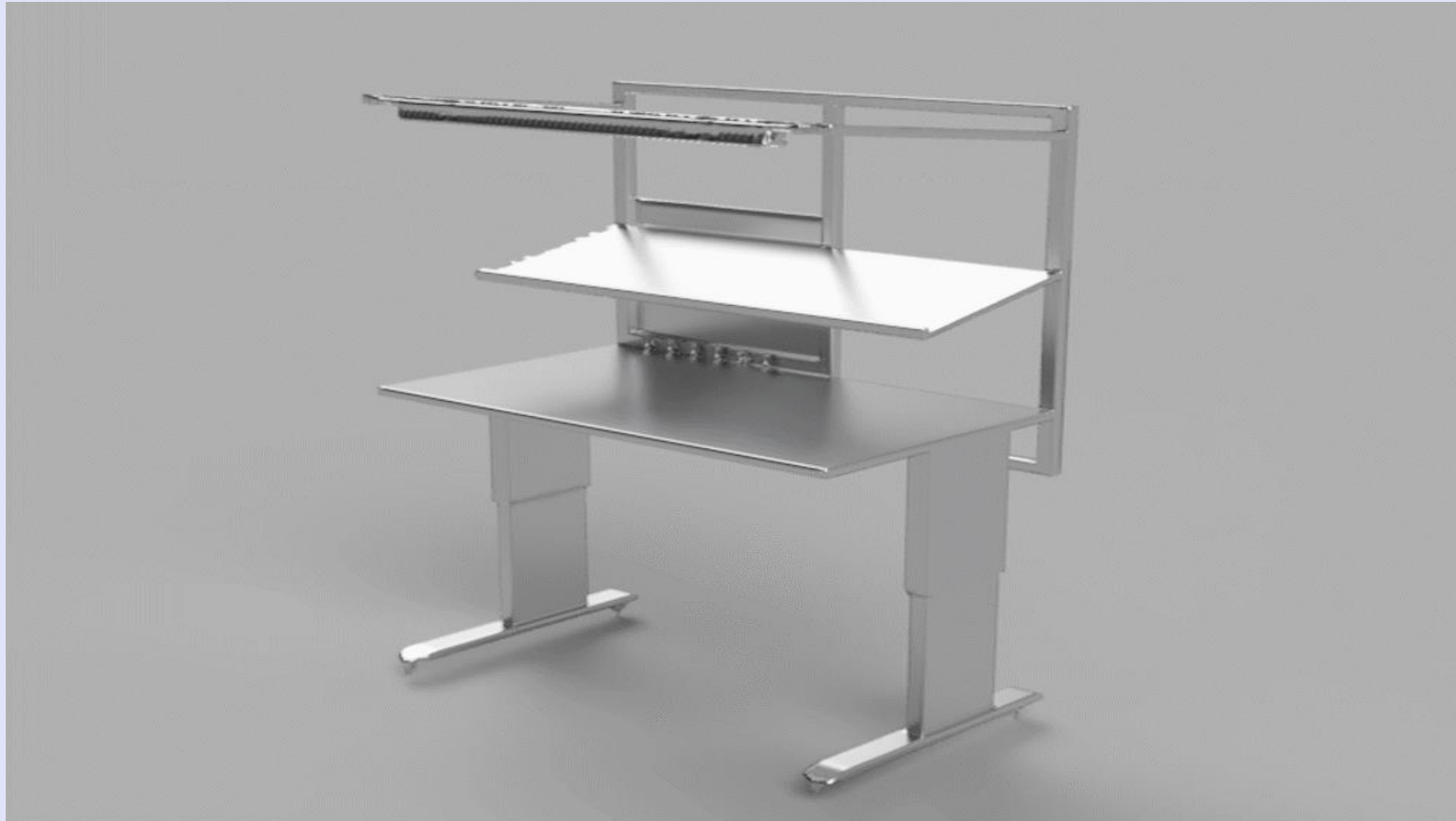


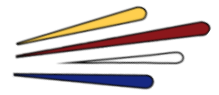
Final Result





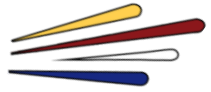
Workbench's Ergonomics





The operator is finally comfortable on the Workbench





Let's try an assembly
operation on a
"normal" workbench



**Thanks for
listening**

